

Templeton Global Fund A (acc) USD

Value LU0128525929 Factsheet as of 31 March 2024

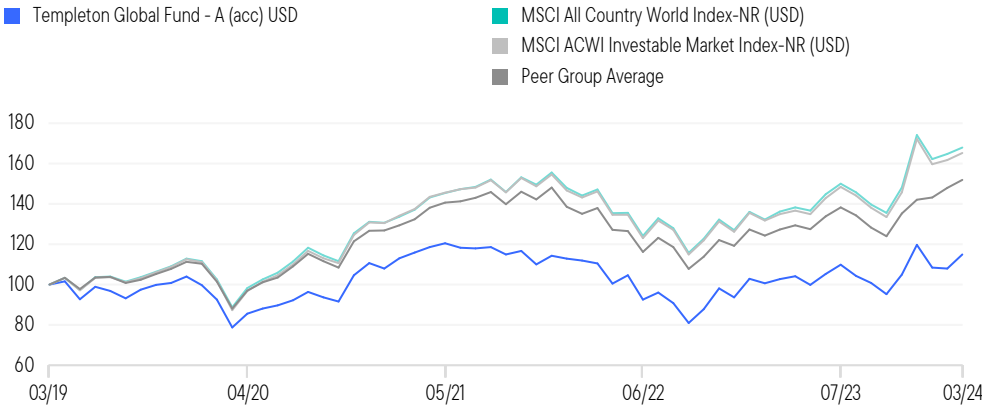
This is a marketing communication. Please refer to the prospectus of the UCITS and to the KID/KIID before making any final investment decisions.

Investment Overview

Templeton Global Fund (the “Fund”) is classified as Article 8 under EU Sustainable Finance Disclosure Regulation and aims to increase the value of its investments over the medium to long term. The Fund pursues an actively managed investment strategy and invests mainly in equity securities issued by companies of any size located in any country, including emerging markets.

Past performance does not predict future returns.

Performance Over 5 Years in Share Class Currency (%)



Discrete Annual Performance (%)

	03/23	03/22	03/21	03/20	03/19	03/18	03/17	03/16	03/15	03/14
	03/24	03/23	03/22	03/21	03/20	03/19	03/18	03/17	03/16	03/15
A (acc) USD	11.85	-7.10	-4.51	46.92	-21.19	-6.79	9.42	13.92	-11.59	-2.54
MSCI All Country World Index-NR (USD)	23.22	-7.44	7.28	54.60	-11.26	2.60	14.85	15.04	-4.34	5.42
MSCI ACWI Investable Market Index-NR (USD)	22.45	-7.68	6.30	57.58	-12.73	1.89	15.03	15.37	-4.36	5.12
Peer Group Average	19.44	-7.64	4.18	50.34	-11.96	-1.00	13.88	10.91	-4.84	2.02

Total Returns (%)

	Cumulative						Average Annual				Inception Date
	1-Mo	3-Mo	YTD	1-Yr	3-Yr	5-Yr	Inception	3-Yr	5-Yr	Inception	
A (acc) USD	4.96	3.78	3.78	11.85	-0.79	14.87	135.28	-0.26	2.81	3.81	14/5/2001
MSCI All Country World Index-NR (USD)	3.14	8.20	8.20	23.22	22.35	67.87	352.22	6.95	10.91	6.82	—
MSCI ACWI Investable Market Index-NR (USD)	3.16	7.72	7.72	22.45	20.16	65.25	379.73	6.31	10.56	7.09	—
Peer Group Average	2.71	6.87	6.87	19.24	14.73	51.86	234.29	4.69	8.71	5.42	—
Quartile Ranking	1	4	4	4	4	4	—	4	4	—	—

The value of shares in the Fund and income received from it can go down as well as up, and investors may not get back the full amount invested.

Performance details provided are in share class currency, include the reinvested dividends gross of tax and are net of management fees. Sales charges, taxes and other locally applied costs have not been deducted. The fund's returns may increase or decrease as a result of changes to foreign exchange rates.

Up to date performance figures can be found on our website.

When performance for either the portfolio or its benchmark has been converted, different foreign exchange closing rates may be used between the portfolio and its benchmark.

Fund Overview

Fund Base Currency	USD
Fund Inception Date	28/02/1991
Share Class Inception Date	14/05/2001
ISIN	LU0128525929
Sedol	7116728
Valor Number	1240294
Bloomberg	TEMGGA LX
Morningstar Peer Group	Global Large-Cap Blend Equity
EU SFDR Category	Article 8
Minimum Investment	USD 1000

Benchmark(s) and Type

MSCI ACWI Investable Market Index-NR	Comparator
MSCI All Country World Index-NR	Comparator

Charges

Maximum Initial Charge	5.75%
Exit Charge	—
Ongoing Charges Figure	1.82%
Performance Fee	—

The charges are the fees the Fund charges to investors to cover the costs of running the Fund. Additional costs, including transaction fees, will also be incurred. These costs are paid out by the Fund, which will impact on the overall return of the Fund. Fund charges will be incurred in multiple currencies, meaning that payments may increase or decrease as a result of currency exchange fluctuations.

Fund Characteristics

	Fund
NAV-A (acc) USD	\$45.91
Total Net Assets	\$612.37 Million
Number of Issuers	36
Average Market Cap (Millions USD)	\$317,031
Price to Book	2.23x
Price to Earnings (12-Month Trailing)	19.06x
Price to Cash Flow	11.68x
Standard Deviation (5 Yr)	19.79%

Top Equity Issuers (% of Total)

	Fund
ALPHABET INC	4.81
HONDA MOTOR CO LTD	4.53
WALT DISNEY CO/THE	4.34
UNITEDHEALTH GROUP INC	4.02
HCA HEALTHCARE INC	3.85
SAMSUNG ELECTRONICS CO LTD	3.68
VEOLIA ENVIRONNEMENT SA	3.57
ZIMMER BIOMET HOLDINGS INC	3.51
DANONE SA	3.44
SIGNIFY NV	3.40

Sector Allocation (% of Total)

	Fund	MSCI All Country World Index-NR
Information Technology	18.41	23.68
Health Care	17.22	11.14
Industrials	12.96	10.80
Communication Services	12.18	7.56
Financials	10.42	16.06
Materials	9.38	4.23
Consumer Discretionary	7.18	10.90
Consumer Staples	3.45	6.43
Other	5.85	9.21
Cash & Cash Equivalents	2.95	0.00

Geographic Allocation (% of Total)

	Fund	MSCI All Country World Index-NR
United States	50.25	63.82
France	10.38	2.84
United Kingdom	9.50	3.41
Ireland	6.11	0.08
Japan	4.50	5.52
Germany	4.38	2.04
South Korea	3.63	1.28
Taiwan	2.77	1.76
Other	5.53	19.25
Cash & Cash Equivalents	2.95	0.00

Market Cap Breakdown (% of Equity) (USD)

	Fund
2.0-5.0 Billion	3.51
5.0-10.0 Billion	4.85
10.0-25.0 Billion	9.82
25.0-50.0 Billion	17.92
>50.0 Billion	63.90

Portfolio Management

	Years with Firm	Years of Experience		Years with Firm	Years of Experience
Peter Moeschter, CFA	26	31	Peter Sartori	4	33
Warren Pustam, CFA	11	18	Christopher Peel, CFA	16	16

What are the Risks?

The Fund does not offer any capital guarantee or protection and you may not get back the amount invested. The Fund is subject to the following risks which are materially relevant: **Emerging markets risk:** the risk related to investing in countries that have less developed political, economic, legal and regulatory systems, and that may be impacted by political/economic instability, lack of liquidity or transparency, or safekeeping issues. **Foreign Currency risk:** the risk of loss arising from exchange-rate fluctuations or due to exchange control regulations. **Liquidity risk:** the risk that arises when adverse market conditions affect the ability to sell assets when necessary. Such risk may be triggered by (but not limited to) unexpected events such as environmental disasters or pandemics. Reduced liquidity may have a negative impact on the price of the assets. Complete information on the risks of investing in the Fund are set out in the Fund's prospectus.

Glossary

Ongoing Charges Figure (OCF): The Ongoing Charges Figure (OCF) includes the fees paid to the management company, the investment manager and the depository, as well as certain other expenses. The OCF is calculated by taking the relevant main material costs paid out over the 12-month period indicated and dividing them by the average net assets over the same period. The OCF does not include all expenses paid by the fund (for example, it does not include what the fund pays for buying and selling securities). For a comprehensive list of the types of costs deducted from fund assets, see the prospectus. For recent all-in annual costs, as well as hypothetical performance scenarios that show the effects that different levels of return could have on an investment in the fund, where applicable, see the KID/KIID. **Comparator:** Benchmark is used for comparing Fund performance, but is not a constraint to Fund Investment. **Price to Book:** The price per share of a stock divided by its book value (i.e., net worth) per share. For a portfolio, the value represents a weighted average of the stocks it holds. **Price to Earnings (12-Month Trailing)** is the share price of a stock, divided by its per-share earnings over the past year. For a portfolio, the value represents a weighted average of the stocks it holds. **Price to Cash Flow:** Supplements price/earnings ratio as a measure of relative value for a stock. For a portfolio, the value represents a weighted average of the stocks it holds. **Standard Deviation:** Measure of the degree to which a fund's return varies from the average of its previous returns. The larger the standard deviation, the greater the likelihood (and risk) that a fund's performance will fluctuate from the average return.

Portfolio Data Information

Holdings are provided for information purposes only and should not be deemed a recommendation to buy or sell the securities mentioned.

Important Information

This Fund has been classified as Article 8 under the Regulation on sustainability related disclosures in the financial services sector (EU) 2019/2088. These are Funds which have an ESG integration approach and, in addition, have binding environmental and/or social characteristics in their investment process.

Further information in relation to the sustainability-related aspects of the Fund can be found at www.franklintempleton.lu/SFDR. Please review all of the Fund's objectives and characteristics before investing. This is a sub-fund ("Fund") of Franklin Templeton Investment Funds ("FTIF"), a Luxembourg registered SICAV. Subscriptions to shares of the Fund can only be made based on the Fund's current Prospectus and, where available, the relevant Key Information Document ("KID") / Key Investor Information Document ("KIID"), accompanied by the latest available audited annual report and the latest semi-annual report if published thereafter. These documents can be found on our website at www.ftidocuments.com, obtained, free of charge, from your local FT representative or can be requested via FT's European Facilities Service which is available at <https://www.eifs.lu/franklintempleton>. The Fund's documents are available in English, Arabic, French, German, Italian, Polish and Spanish. In addition, a summary of investor rights is available from www.franklintempleton.lu/summary-of-investor-rights. The summary is available in English. The sub-funds of FTIF are notified for marketing in multiple EU Member States under the UCITS Directive. FTIF can terminate such notifications for any share class and/or sub-fund at any time by using the process contained in Article 93a of the UCITS Directive. For the avoidance of doubt, if you decide to invest, you will be buying units/shares in the Fund and will not be investing directly in the underlying assets of the Fund.

Given the variety of investment options available today, we suggest investors seek guidance from a Financial Adviser.

CFA® and Chartered Financial Analyst® are trademarks owned by CFA Institute.

© **Morningstar, Inc.** All rights reserved. The information contained here in (1) is proprietary to Morningstar and/or its content providers; (2) may not be copied or distributed; and (3) is not warranted to be accurate, complete or timely. Neither Morningstar nor its content providers are responsible for any damages or losses arising from any use of this information.

Benchmarks: The **MSCI All Country World Index-NR** is used for performance comparison purposes. It is not used as a constraint on how the Fund's portfolio is to be constructed nor set as a target for the Fund's performance to beat. The **MSCI ACWI Investable Market Index-NR** is used as a proxy for the universe, for the purpose of the ESG rating comparison. Source: MSCI makes no warranties and shall have no liability with respect to any MSCI data reproduced herein. No further redistribution or use is permitted. This report is not prepared or endorsed by MSCI. Net Returns (NR) include income net of tax withholding when dividends are paid.

In Europe (excluding Poland & Switzerland), this financial promotion is issued by Franklin Templeton International Services S.à r.l. - Supervised by the Commission de Surveillance du Secteur Financier - 8A, rue Albert Borschette, L-1246 Luxembourg - Tel: +352-46 66 67-1 - Fax: +352-46 66 76. **In Switzerland**, issued by Franklin Templeton Switzerland Ltd, Stockerstrasse 38, CH-8002 Zurich. Paying agent in Switzerland is BNP Paribas Securities Services, Paris, succursale de Zurich, Selnaustrasse 16, 8002 Zurich. **In Poland**, Templeton Asset Management (Poland) TFI S.A.; Rondo ONZ 1; 00-124 Warsaw. **In the Middle East**, issued by Franklin Templeton Investments (ME) Limited, authorized and regulated by the Dubai Financial Services Authority. Franklin Templeton Investments, The Gate, East Wing, Level 2, Dubai International Financial Centre, P.O. Box 506613, Dubai, U.A.E., Tel: +9714-4284100 Fax: +9714-4284140. **In Canada**, this material may be distributed in Canada by Franklin Templeton Investments Corp. **UK contact information**, UK Freephone: 0800 305 306 | email: enquiries@franklintempleton.co.uk | www.franklintempleton.co.uk

© 2024 Franklin Templeton. All rights reserved.